

A modern architectural rendering of a courtyard and interior. The courtyard features a central tree, a stone wall, and a wooden door. The interior shows a dining area with a table and chairs, and a large indoor plant. The floor is made of large, light-colored ceramic tiles.

SUELOS DE CERÁMICA

SERIE SELENE

GRES ARAGÓN
SOLUTIONS FOR LIVING

GRES ARAGÓN

SOLUTIONS FOR LIVING

SERIE SELENE

PORCELÁNICO
PORCELAIN TILES

BASES TILES



PRODUCTO ANTIPATÓGENO
ANTIPATOGEN PRODUCT

60 X 120

120 X 120

PIEZAS ESPECIALES

SPECIAL PIECES



ZANQUIN RECTO
Straight step side tile



RODAPIÉ 60
SKIRTING BOARD 60



TAPAS PELDAÑOS
STEPS COVERS



ZANQUIN REDONDEADO
Rounded step side tile



TABICA
RISER



PELDAÑOS
STAIR TREAD

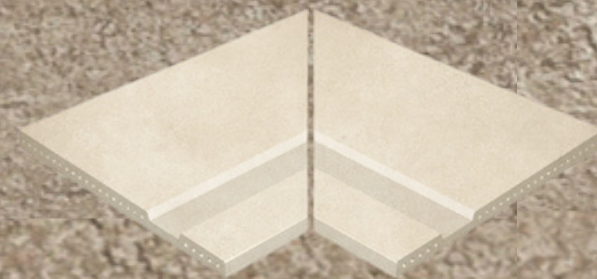
* TAMAÑO PELDAÑO: REDONDEADO (120', *150') / RECTO (120', *150')
STAIR TREAD SIZE: ROUNDED (120', *150') /STRAIGHT (120', *150')

PIEZAS ESPECIALES

SPECIAL PIECES



BORDE DESBORDANTE 60
OVERFLOWING EDGE 60



ESQ.INT.BORDE
DESbordante
OVERFLOWING INTERNAL EDGE



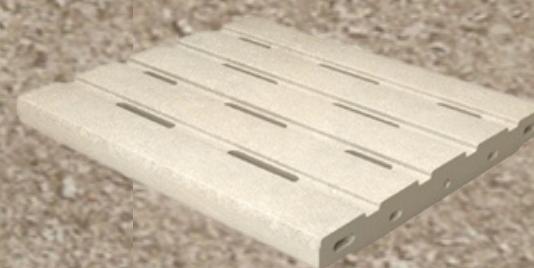
ESQ.EXT.BORDE
DESbordante
OVERFLOWING EXTERNAL EDGE



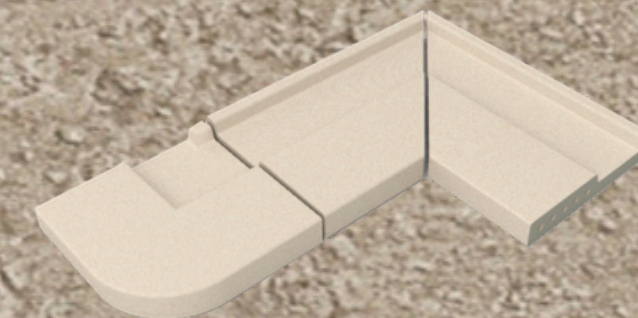
REJILLA FLEXIBLE
RANURADA
GROOVED FLEXIBLE GRID



ESQUINA REJILLA
CORNER GRID



REJILLA MONOCOMPACT
RANURADA
GROOVED MONOCOMPACT GRID



***NICHOS ESQ. DECHA./IZDA.**
NICHO
***NICHE RIGHT/LEFT CORNER**

PIEZAS ESPECIALES

SPECIAL PIECES



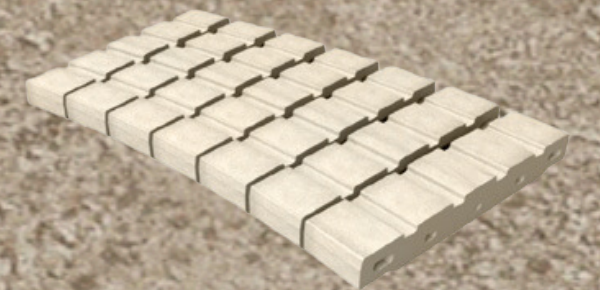
BORDE NICHOS 60
NICHE EDGE 60



REJILLA SMART
SMART GRID



ESQUINA REJILLA SMART
CORNER SMART GRID



REJILLA FLEXIBLE
RANURADA
GROOVED FLEXIBLE GRID

PIEZAS ESPECIALES

SPECIAL PIECES



CANTONERA
EXTERNAL RADIAL TILE



RINCONERA
INTERNAL RADIAL TILE



CANTONERA TRANSICIÓN
EXTERNAL RADIAL TRANSITION TILE



RINCONERA TRANSICIÓN
INTERNAL RADIAL
TRANSITION TILE



ESQ. EXT. CANTONERA
EXTERNAL MITRE



ESQ. INT. RINCONERA
INTERNAL MITRE



ESCOCIA CANTONERA
EXTERIOR
ROUND EXTERNAL MITRE



ESCOCIA RINCONERA
INTERIOR
ROUND INTERNAL MITRE

SELENE BLANCO



SELENE MOCCA



SELENE CREMA





SELENE CREMA



SELENE CREMA



SELENE CREMA



SELENE BLANCO



SELENE BLANCO

GRES ARAGÓN
SOLUTIONS FOR LIVING